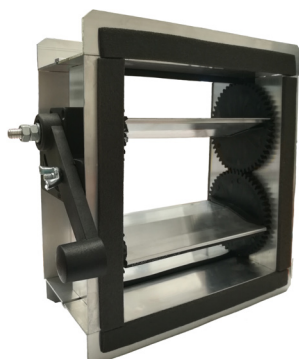


SRCA



Serrande di regolazione in alluminio passo 100 mm da parete

Costruzione: Telaio in alluminio estruso. Alette in alluminio estruso.
Perni di rotazione in nylon

Azionamento: Movimento contrapposto azionabile manualmente o con servomotore

Fissaggio: Mediante bulloni agli angoli delle flange

H (mm)	Prezzo €							
	Base B (mm)							
	200	300	400	500	600	700	800	
210								
310								
410								
510								LM 24A
610								LM 230A
710								
810								
910								
1010								
1110								
1210								NM 24A
1310								NM 230A
1410								
1510								

H (mm)	Base B (mm)							
	900	1000	1100	1200	1300	1400	1500	
210								LM 24A
310								LM 230A
410								
510								
610								
710								NM 24A
810								NM 230A
910								
1010								
1110								NM 24A
1210								SM 230A
1310								
1410								
1510								

SRCA motorizzate LM NM SM

BOCCHETTE • DIFFUSORI • GRIGLIE • SERRANDE

serrande ad alette contrapposte



Codice	LM24A	LM230A
Tensione	24 V	230 V
Comando	On-Off/3-p	On-Off
Prezzo €		



Codice	NM24A	NM230A
Tensione	24 V	230 V
Comando	On-Off/3-p	On-Off
Prezzo €		



Codice	SM24A	SM230A
Tensione	24 V	230 V
Comando	On-Off/3-p	On-Off/3-p
Prezzo €		

DIAGRAMMA SCELTA RAPIDA / QUICK SELECTION DIAGRAM

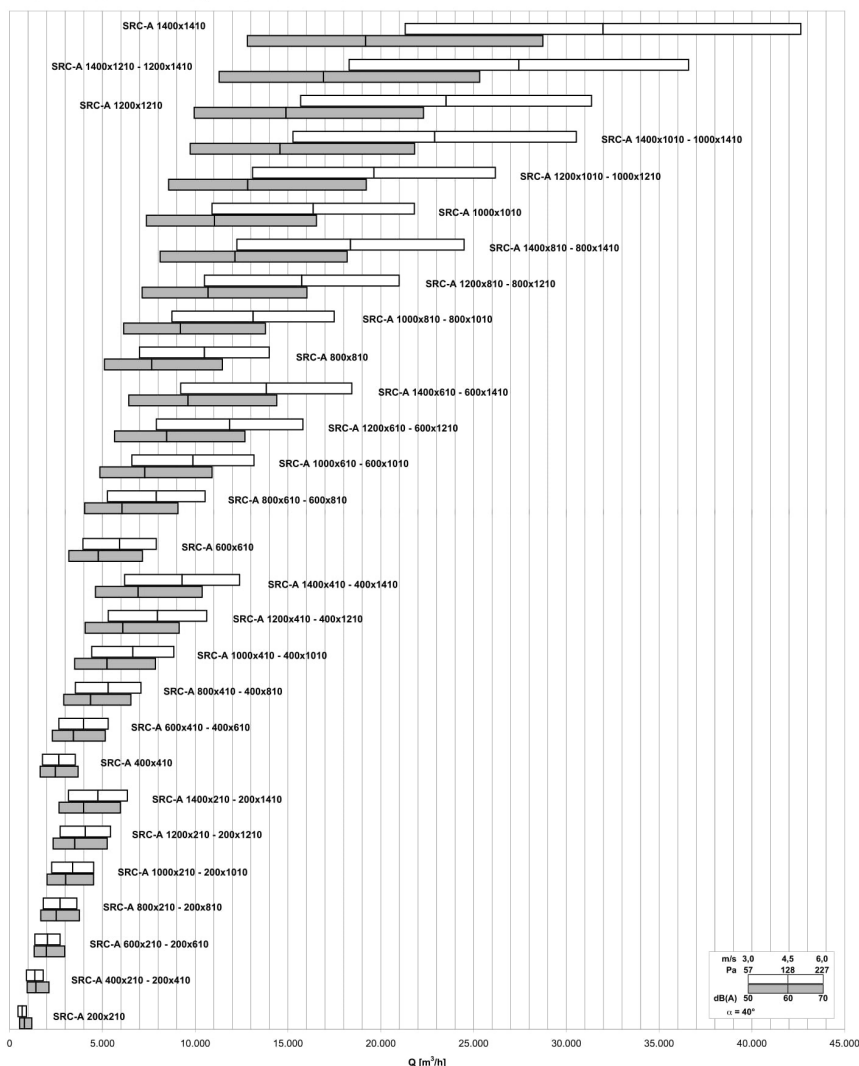


TABELLA DI SELEZIONE / SELECTION TABLE

Modello Model	A ₁ [m ²]	v [m/s]		Q [m ³ /h]		D _p (α=40°) [Pa]		L _{wa} (α=40°) [dB(A)]	
		min	max	min	max	min	max	min	max
SRC-A 200x210	0,0420	3	6	450	910	57	227	46	63
SRC-A 400x210 - 200x410	0,0840	3	6	910	1810	57	227	49	66
SRC-A 600x210 - 200x610	0,1260	3	6	1360	2720	57	227	51	68
SRC-A 800x210 - 200x810	0,1680	3	6	1810	3630	57	227	52	69
SRC-A 1000x210 - 200x1010	0,2100	3	6	2270	4540	57	227	53	70
SRC-A 1200x210 - 200x1210	0,2520	3	6	2720	5440	57	227	54	71
SRC-A 1400x210 - 200x1410	0,2940	3	6	3180	6350	57	227	54	71
SRC-A 400x410	0,1640	3	6	1770	3540	57	227	52	69
SRC-A 600x410 - 400x610	0,2460	3	6	2660	5310	57	227	54	71
SRC-A 800x410 - 400x810	0,3280	3	6	3540	7080	57	227	55	72
SRC-A 1000x410 - 400x1010	0,4100	3	6	4430	8860	57	227	56	73
SRC-A 1200x410 - 400x1210	0,4920	3	6	5310	10630	57	227	57	74
SRC-A 1400x410 - 400x1410	0,5740	3	6	6200	12400	57	227	57	74
SRC-A 600x610	0,3660	3	6	3950	7910	57	227	55	72
SRC-A 800x610 - 600x810	0,4880	3	6	5270	10540	57	227	57	74
SRC-A 1000x610 - 600x1010	0,6100	3	6	6590	13180	57	227	58	75
SRC-A 1200x610 - 600x1210	0,7320	3	6	7910	15810	57	227	58	75
SRC-A 1400x610 - 600x1410	0,8540	3	6	9220	18450	57	227	59	76
SRC-A 800x810	0,6480	3	6	7000	14000	57	227	58	75
SRC-A 1000x810 - 800x1010	0,8100	3	6	8750	17500	57	227	59	76
SRC-A 1200x810 - 800x1210	0,9720	3	6	10500	21000	57	227	60	77
SRC-A 1400x810 - 800x1410	1,1340	3	6	12250	24490	57	227	60	77
SRC-A 1000x1010	1,0100	3	6	10910	21820	57	227	60	77
SRC-A 1200x1010 - 1000x1210	1,2120	3	6	13090	26180	57	227	60	78
SRC-A 1400x1010 - 1000x1410	1,4140	3	6	15270	30540	57	227	61	78
SRC-A 1200x1210	1,4520	3	6	15680	31360	57	227	61	78
SRC-A 1400x1210 - 1200x1410	1,6940	3	6	18300	36590	57	227	62	79
SRC-A 1400x1410	1,9740	3	6	21320	42640	57	227	63	80

